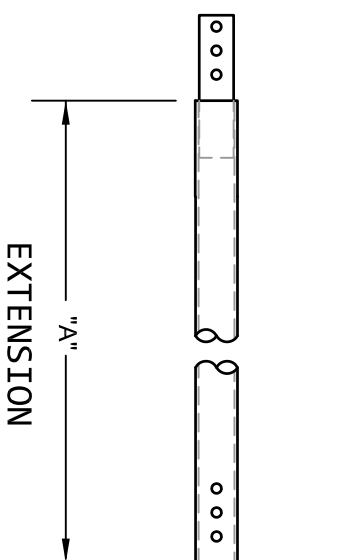
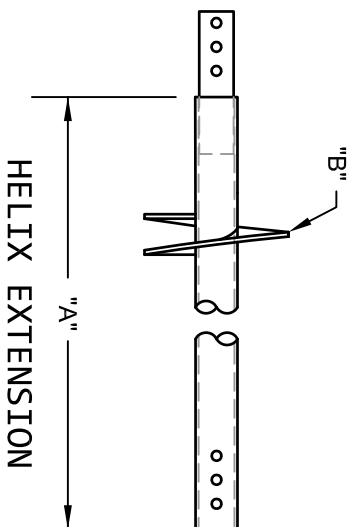
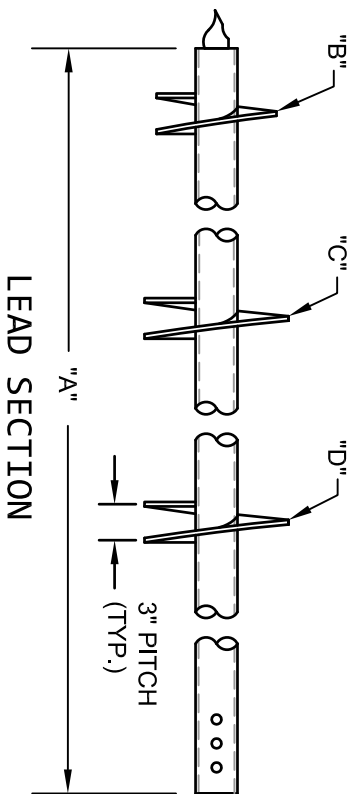


3 1/2" Ø HELICAL PILES AND ANCHORS



LEAD SECTION TABLE

CAT #	"A"	"B"	"C"	"D"
4600	5'-0"	12"		
4612	5'-0"	12"	14"	
4613	5'-0"	10"	12"	
4641	7'-0"	8"	10"	12"
4615	7'-0"	10"	12"	14"
4616	7'-0"	12"	14"	16"
4618	7'-0"	14"	16"	

HELIX EXTENSIONS

CAT #	"A"	"B"
4620.12	5'-0"	12"
4620.14	5'-0"	14"
4620.16	5'-0"	16"
4622.12	7'-0"	12"
4622.14	7'-0"	14"
4622.16	7'-0"	16"

EXTENSIONS

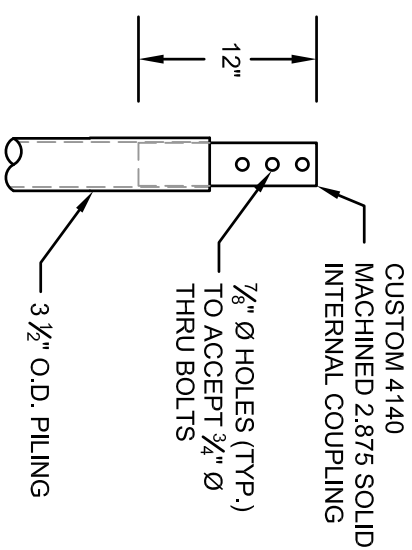
CAT #	"A"	ICC-ES
4620	5'-0"	
4622	7'-0"	
4625	10'-0"	

STRENGTH RATING

MAX. TORQUE STRENGTH - 13,000 FT-LB
 ULTIMATE CAPACITY (TENS/COMP) - 91 KIP*
 ALLOWABLE CAPACITY (TENS/COMP) - 45.5 KIP*
 * BASED ON A TORQUE FACTOR (K) = 7

* MULTI-HELIX ARE SPACED 3 DIAMETERS ABOVE THE LOWER HELIX.

- POLYETHYLENE COPOLYMER THERMOPLASTIC COATING PER ICC-ES AC 228.
- REFERENCE EXTENSION AND LEAD SECTION TABLES FOR TYPICAL LENGTHS AND HELIX COMBINATIONS.
- SHAFT MATERIAL IS 3 1/2" DIAMETER, 0.254" WALL THICKNESS AND MINIMUM F_y = 65 KSI PIPE.
- HELIX MATERIAL IS MINIMUM 50 KSI CARBON STEEL. PLATE THICKNESS AVAILABLE IN 0.375" AND 0.5".
- CONNECTORS ARE 4140 CUSTOM MACHINED 2.875" SOLID INTERNAL THRU BOLT COUPLERS. BOTH MALE AND FEMALE COUPLERS ARE SHOP WELDED IN PLACE.
- NOMINAL SPACING BETWEEN HELICAL PLATES IS THREE TIMES THE DIAMETER OF THE LOWER HELIX.
- MANUFACTURER TO HAVE IN EFFECT INDUSTRY RECOGNIZED WRITTEN QUALITY CONTROL FOR ALL MATERIALS AND MANUFACTURING PROCESSES.
- ALL WELDING IS TO BE DONE BY WELDERS CERTIFIED UNDER SECTION 5 OF THE AWS CODE D1.1.



RAM JACK

DWG. NO. : 3500.0001	CATALOG NO. : SEE TABLES	REV. 2
SCALE 3/4" = 1'-0"	DRAWN BY SR	DATE: 6/6/2013
	SHEET 1 OF 1	